



Tucson Garden Railway Society's Time Table

Society web site: <http://tucsongrs.org>

Editor e-mail: jmiller66@cox.net

October, 2008

The October meeting is on the 18th of October at the home of Chuck and Ruth Taylor at 10:00 am.

4081 S. Tarantula Hawk Place
Tucson, AZ 85735
(520) 908-1312

Directions: Ajo Way is Exit 99 on I-19 but because of the construction people must watch carefully to get on I-19 if they are traveling east on I-10.

From I-19 it is 10 miles west to our house. Take Ajo Way west about 9 miles to San Joaquin (this is past Kinney Road). Turn right on San Joaquin and travel 1.5 miles to Tree Frog Trail. Turn right on Tree Frog Trail and take the 2nd left which is Tarantula Hawk Place. We are at the end of the cul-de-sac between two houses painted yellow.

Chuck and I relocated from the Chicago area in January 2006 and moved into our new house in March 2006. We have spent most of our time since then furnishing our home and building Chuck's car repair facility/ Ruth's storage area which we call "C" Rip. In railroad terms this is where "bad order" cars are brought for repair before they can travel on in a train consist.

The area we live in is called "Critterland" on the Pima County records. All of the streets in our subdivision carry names of the various critters found in this area i.e. "Tarantula Hawk" Place (which is a wasp with a very nasty sting), "Bark Beetle" Place, "Tree Frog" Trail, "Velvet Ant" Place and "Chuckwalla" Place to name a few. We have decided to name our railroad "Critterland Junction - The Desert Route".

Nick Buckholtz has made a visit to our property to give us an idea for a layout. It was important to wait for the monsoons to end in order to gauge how the washes on and around our property would carry the water. In the meantime, Chuck has been very busy putting together building kits and creating a few of this own from scratch. Chuck had quite a few pieces of rolling stock and several engines before we moved from Illinois and since has added additional equipment from the purchase of two private

collections from TGRS club members who were moving.

Critterland Junction Railroad
"The Desert Route"



Logo of the CJRR



Engines and rolling stock for the CJRR

Membership Renewal Time is Here

Current membership expires on June 30.
Membership renewal for the 2008/9 fiscal year is \$30.

I am now accepting renewal payments for the upcoming year. Payments can be made at the monthly meetings or by mail (please do not send cash through the mail) to:

Ruth Taylor
4081 S. Tarantula Hawk Place
Tucson, AZ 85735

MONTHLY LUNCHEON

Come join your TGRS friends for a social luncheon AND POOL TOURNAMENT on Tuesday October 14th at The Red Garter Saloon, 3143 E Speedway Blvd. That's the north side of Speedway, just east of Country Club. The last time we were at the Red Garter, the food got rave reviews; so come out even if you just want to cheer on the pool players. Plan to arrive about 11:30 to beat the lunch crowd and we will play pool after lunch. The pool tournament will use the Cook Speed Scoring rules for all the games except the championship, so things will move quickly. It's all for fun, so come join us. Any questions, call Chuck Cook @ 797-1066 or 977-7673

To All TGRS Members:

Your Board of Directors has decided to accept **classified ads** from members in good standing, for garden railroading related items, at no cost to the member. These ads will be included in the next "Time Table" newsletter on a one time basis. Should the member desire to have the ad repeated in another issue, he or she must contact the newsletter editor. Please be as descriptive as possible, and include your name, phone number or e-mail address, along with the desired selling price. The ad should be in Word format so that it can easily be inserted in the newsletter without the necessity of being retyped by the Editor. We hope this will prove to be a valuable service to our members.

TGRS Christmas Party

It will be at the Hometown Buffet on Oracle Saturday December 6th beginning at noon. The cost is \$10/person. Ruth will take advance payments by mail (check only) or at the November meeting. She will also take payments at the door.

Mail Checks to:

Ruth Taylor
4081 S. Tarantula Hawk Place
Tucson, AZ 85735

There will be a gift exchange.

More information to follow



ALL ABOARD

YOU ARE INVITED TO THE 5th ANNUAL

OPEN HOUSE

(TGRS General Meeting)

Gary and Peggy Martin's

EAGLE MOUNTAIN GARDEN RAILROAD

DATE:

SATURDAY, NOVEMBER 15, 2008

Time: 12:30 Meeting

Open house begins after meeting

Buffet served at 5:00PM

Please RSVP, if you plan to attend the buffet

**QUESTIONS OR DIRECTIONS, CALL
GARY OR PEGGY MARTIN AT (520)2997428**

Festival of Lights

12th-----11:00---3:00p.m.

13th-----3----7 p.m.

14th---11:00---3:00 p.m.

19th-----11:00---3:00p.m.

20th-----3----7 p.m.

21th---11:00---3:00 p.m.

26th-----11:00---3:00p.m.

27th-----3----7 p.m.

28th---11:00---3:00 p.m.

We were only going to do 2 weekends and Bob & Phyllis said "they would do the 3rd weekend, even if they had to do themselves".

Ellen

Walt's Barn

by Willis Fagg

For those of you who have not attended recent garden railway convention, the term "Walt's Barn" may be an unfamiliar reference. Walt's barn is the original workshop of the late Walt Disney that was built for him to store and maintain the equipment on his personal railroad. The story of Walt's (extreme) passion for trains ultimately led him on the most risky financial venture of his life; that which we today call Disneyland and subsequent Disney parks. Walt's complete story is documented in the book "xxxx" written by Michael Broggie. For the past few years, Michael Broggie has been a featured speaker at conventions on the subject of Walt's history with trains.

But I'm getting ahead of myself. Walt Disney's family moved to Marceline Missouri in 1906 when he was a boy of 4. The farm had a barn. Growing up in this small mid-western town, Walt considered the barn to be his "happiest place". He developed a love of the small town that he recreated in all Disney parks in the form of Main Street USA.

As Walt struggled in the world of artistic endeavor and ultimately became successful with a mouse he called Mickey, his interests broadened. He was fascinated with mechanical things and many of the staff he hired in his growing film business were experts in various engineering fields. He referred to these employees as "Imagineers". One of his "Imagineers" was Roger Broggie, father of the aforementioned Michael Broggie.

Knowledgeable of his passion for trains, one of his "Imagineers" invited Walt over to see the live steam (ride on) train he had running on his property. That single event convinced Walt that he too had to have his own train that he could run on the five acre property he had purchased on Carolwood Drive in the Holmby Hills area of Los Angeles.

He put his engineering staff to work designing a scale model of an engine he remembered from his childhood days and built a railroad on his property. The engine and all rolling stock were scratch built by Disney's own staff, with him learning and helping along the way. He named the engine "Lilly Belle" after his wife. There are a lot of stories surrounding his home railroad that makes for great reading.



Copy of the Lillie Belle. The original is still in the possession of the Disney family.
Photo by Richard Nelson

In the course of building his railroad, Walt charged one of his architects with the design of a barn to serve as a workshop for his railroad. This barn was patterned after the barn on the Disney family property in Missouri and which had also been recreated for the 1949 film "So Dear To My Heart".

The barn was built on his property and served its designated purpose over the years. After the passing of Walt and subsequently his wife, the family sold the Carolwood Drive property and the barn was given to the Carolwood Pacific Historical Society, a foundation formed by Michael Broggie for the preservation of Walt Disney's trains.



Walt's Barn at Griffith Park

This barn is now located in Los Angeles' Griffith Park adjacent to the live steam park. The barn, along with a large collection of Disney train memorabilia, is open to the public on the third Sunday of every month from 11:00 AM to 3:00 PM. Displays include much of Walt's original

equipment and a collection of live steam engines. It's a great display of the detailed craftsmanship used in the scratch built equipment. It is well worth the effort to see this display if you are in the LA area. I certainly enjoyed it.

Information on the Carolwood Pacific Historical Society and the schedule for the display may be found at: <http://www.carolwood.org>

TCM Project by Dick Izen

The Tucson Children's Museum (TCM) project was discussed at the September meeting (at the Schwab's home). Briefly, TCM has asked us to expand the project and help them to not only create an elevated railroad line around the room, but to also construct an entire room of train exhibits. Figure 1 below shows the planned exhibits and their layout in the train gallery.

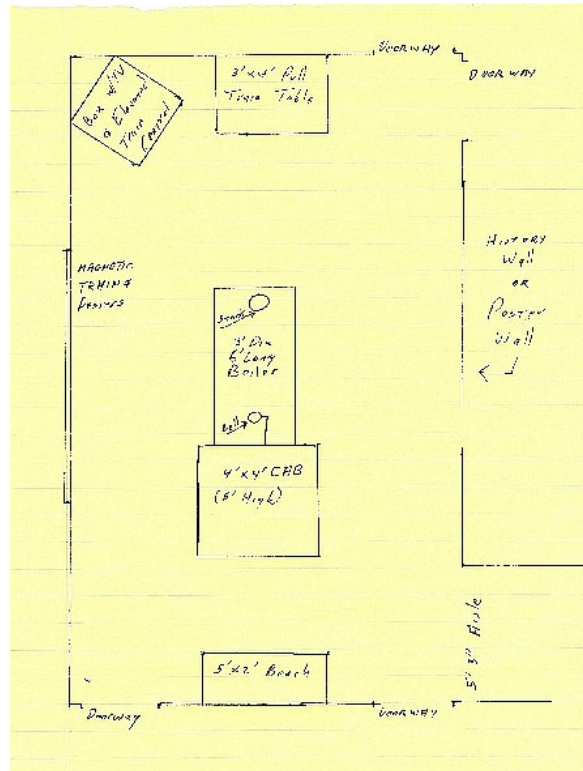


Figure 1, planned floor layout (without out elevated loop railroad)

The control and television (for the engineer's eye view) are located in the angled box in the upper left of the drawing. At the top is a push pull train set while magnetic train cars will be used on the wall to the left and historical posters on the wall to the right. In the center of the gallery is a 'steam locomotive' with a crawl through boiler and rotatable wheels.

We have already received \$1,500 toward funding the project from the local Union Pacific Railroad

operations largely due to the efforts of Ruth Taylor. The museum is pursuing additional sources of funding including the Union Pacific foundation and private donors. Byron Skinner has donated a box of 5 foot Aristocraft straight track.

Glenn Mitchell is working on the electronics (for the push button and a momentum circuit); Janet Mitchell and Peggy Martin are working on the photos and posters for the history wall; Nick Buchholz is exercising his CAD program to finalize our designs and create material 'cut lists' correctly; Willis and Dottie Fagg are ferrying rolling stock and other material from Upland in California (to hold down shipping costs). In addition Norm Ulmer, Dave Tiefenbach and Gary Martin have volunteered to work on various parts of the project.

We still have need for more people to help with parts of the project. A couple of these are discussed below. Please think about signing up for some of the tasks described below.

The museum has a traveling exhibit in the room until December 11. They are closed Mondays during the school year but have agreed that we could erect the roadbed and scenery for the elevated loop working on Mondays. I will have a sign up sheet at the next meeting for members who would like to help with this work.

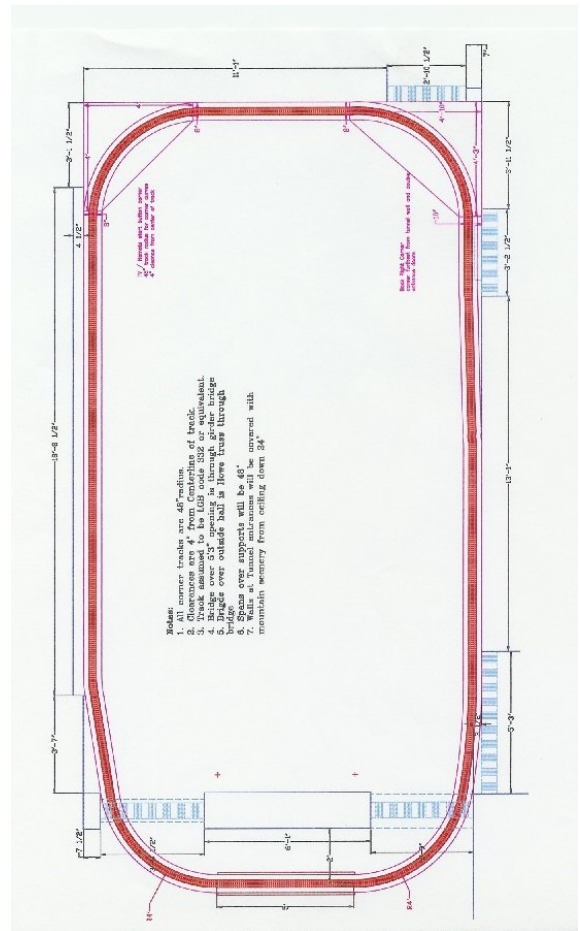


Figure 2, the elevated layout

The elevated loop actually is slightly longer than the room going into 'tunnels' above the two doors at the bottom of the picture. This can be seen in figure 2 below.

The left hand wall has an indentation of 4.5 inches which is over 18 feet long. We would like to fill with building flats. Since this is a freight railroad we would like to find volunteers to build industrial and commercial building flats. For members who don't care to devote Monday's to working at the museum, this is the sort of project that you can complete at home in your own workshop.

The flats ought to be about 2" deep with a 2" loading dock. Since these will be fixed to the wall inside an air conditioned building they can be much less sturdy than buildings we make for our railroads. With over 18 fee of wall space to fill, each flat can be whatever width you want to create.

I will also have a sign up sheet at the next meeting for people who would like to construct an industrial or commercial building flat.

Minutes of the September 20, 2008 Meeting

Respectfully submitted by Ellen Stoesser

The meeting was held at the home of Eileen and Bob Schwab
Norm thanked them for hosting

There were 49 attendees
Minutes of the August meeting were approved.

Vice President's Report: Willis Fagg reported that we will not be doing the October SAHBA Home Show.

Veterans Hospital: He talked to Pepe and he would like us back. The dates discussed were December 29-31 with a Dec. 29--set-up, run 30/31—and tear down on the 31st. He will send them a letter.

Christmas Party is December 6th at noon. Money will still be collected at meetings and at the door. This will be at the Hometown Buffet and the cost of the lunch is \$10.00

Gadsden-Pacific has a December show planned; we do not know the date.

American Home Show: This is being run by new people and they stated that we would have to pay for a space.

County Fair: Willis has a meeting with Peggy in October.

St Thomas Halloween Carnival: October 26th.

St Marks: December 8 & 9th

TBG would like us to hold a meeting there in the spring.

Treasurer's Report: Ruth Taylor reported:

1. Checking account balance 9/16/08
\$13,003.53
2. Reserve account balance 9/16/08 + 17,133.24
3. **Total on deposit**
\$30,136.77
 - a. 3. Revenues from 8/15/08 \$484.35
 - b. 4. Expenses from 8/15/08 - 195.68
 - c. **Net revenues from 8/15/08** \$288.67
4. YEAR TO DATE RECAP:
 5. Revenues to date \$12,825.42*
 6. Expenses to date - 550.70
 7. **Net revenue** \$12,274.72
 8. *Includes \$11,500.00 revenue from Convention
 9. Membership renewals status: 80 families
 10. The treasurer's report was approved.

Editor's Report: Jim Miller reported things were going well and if you have any articles or pictures, please submit them. The Board approved putting classified ads for the members in the newsletter. Jim will also drop unpaid members names from the mailing list. Mary Ann Fabbri thanked Jim for keeping her on the mailing list.

Membership Committee: Iby Ulmer reported we have 80 members.

Maintenance Committee: Gary Martin is working on the Children's Layout trestle.

Education Committee: The new projector arrived for the committee. The price of this was \$844.00.

Social Committee: Bob Conrad was the host for the social at Hometown Buffet on 9/18/2008. 10 people attended and had a great time as well as great food and great conversation. Bob suggested a cook out in the park and he will cook the hamburgers.

Old Business;

- A. **A. Convention Report:** Norm reported that the city of Chandler is reviewing our tax status. We may or may not owe a small amount of sales tax, so we cannot close the books just yet.
- B. **Rails in the Garden:** Glenn Mitchell reported that he now has the 8 layouts needed; these will be on the west side. Ticket prices changes will be \$5.00 for an adult and everyone under 18 free. There will be a list of layouts in the newsletter so you can find the one closest to you and volunteer to help there.
- C. Along with the starter set, the 1st prize winner will get a family membership. 2nd prize is going to be a convention car.
- D. **Chef for a Day** was a huge success with 21 of our members helping, there was good food, a good time and of course Ronald was there.

Maybe the next time it could be done on a week day.

- E. **UMC Children's Hospital**—Norm reported that they have revised the plans and we will see them when they are done and we will then give them our input.
- F. **Tucson Children's Museum:** Dick Izen reported that the preliminary plans called for an elevated loop with G gauge running on it. The museum asked us to expand it to a railroad gallery. There will be pictures of trains, posters with the history of trains in Tucson. There will be see through exhibits of steam and diesel trains. There will be a train tunnel, scenery and educational information. The room will not be available until 12/11/2008 we will then finish up and have a "grand opening".

Grants; \$7000.00 from Union-Pacific and \$100.00 from other contributors. Union-Pacific has already said" they will give TGRS \$1500.00 for this project". Glenn is working on a momentum circuit with a camera in the engine.

New Business:

- A. The Board approved donating \$500.00 to the Southern Arizona Transportation Museum for a 'Point to Point" layout. They are hoping this will bring more people in. Ken Karrels is donating the Trolley.
- B. **Trailer Tires:** The Board approved buying 4 new tires for the small trailer, price not to exceed \$500.00.
- C. **Open House:** Gary and Peggy Martin will host the Nov. club meeting and this will also be his annual Open House. This will be on the 15th with the meeting at 12:30 and the trains running after the meeting. The Open House will be from 2:00—5:00 P.M.
- D. There will be a buffet for club members after the Open House. If you are planning to attend, please let them know ahead of time.
- E. **TBG:** Thorn Pierce reported they are adding things daily. They are in need of buildings. If you would like to donate buildings contact Gary and he will tell you when to bring them as there is not a lot of room to store them. Bob asked "if Thorn would decorate cars for people". He said" he would". Bob thought this was a way for him to get a little extra money.
- F. **Workshops:** At the November meeting Chuck is going to talk about various types of controls. If you would like a workshop about anything Gary does or if someone else would like to hold a workshop this can be done at Gary's.
- G. **Railroad Swap Meet** in Phoenix is Saturday, November 1, 2008 at the North Phoenix Baptist Church. Information---602-336-0973
- H. **NMRA Fall Meet** is Saturday, November 8th—9:00 —4:00 P.M.
- I. Information---Rick Wheeler 52-818-1547
- J. **Wayne Wesolowski** said' there had been some changes in the glue project, but GOOP was still

winning". Marilyn Cook talked to us about the value and use of "tacky glue"

- K. on styrene.
- L. **Gary** had a building he had made from a kit to show us and said "that Upland had 3 left at a good price".
- M. **Peter** said "that Santa Cruz Fair was having a small display and he would take applications there". This is being held on October 3/4/5 and is located at the junction in Sonoita.

The next regular meeting will be at the home of Chuck and Ruth Taylor on October 18, trains will run at 9:00 A.M., and the meeting at 10:00 A.M.

Minutes of the September BOD Meeting

Respectfully submitted by Ellen Stoesser

September 16, 2008-7:00 P.M. at the home of Norm and Ibbby Ulmer

All Board members were present except 2
Pres. Norm thanked Ibbby for hosting
Minutes of the August meeting were approved

Treasurer's Report: Ruth Taylor reported:

1. Checking account balance 9/16/08
\$13,003.53
2. Reserve account balance 9/16/08 + 17,133.24
3. **Total on deposit**
\$30,136.77
 - a. Revenues from 8/15/08 \$484.35
 - b. Expenses from 8/15/08 - 195.68
 - c. **Net revenues from 8/15/08** **\$288.67**
4. YEAR TO DATE RECAP:
 - a. Revenues to date \$12,825.42*
 - b. Expenses to date - 550.70
 - c. **Net revenue** \$12,274.72
5. *Includes \$11,500.00 revenue from Convention
6. Membership renewals status: 80 families
7. The treasurer's report was approved
8. Ruth will begin to look into CD's with the possibility of having them mature every 3 months.
9. Ruth presented a proposed budget for the 2008-2009 budget year. After some minor changes the board approved the budget.

Vice Presidents Events: Willis Fagg reported there was "no room at the inn" for us at the SAHBA Home Show. He is trying to contact someone at the Veterans Hospital. He is also working on the old American Home Show. He is also trying to work something out with Peggy at the County Fair. He is checking to see if there is a Gadsden Pacific show planned for December.

Newsletter: The board discussed letting Club members put in the newsletter railroad equipment that they would like to sell. If there was a long list,

that member could be contacted for more information. This was approved by the Board. Dolores Anderson, wife of Don Anderson, has passed away.

Social Luncheon: This will be Thursday at the Hometown Buffet on Wilmot at 11:15.

Membership Committee: lby reported that we have 76 paid members and 17 that have not renewed. She will have a new roster after the October Rail Trip.

Education Committee: Chuck Cook will talk about various types of controls at the November meeting. The **projector** for the Educational Committee is on its way and should be here by the end of the week. There was discussion about resending our information to the schools in the middle of October.

Old Business:

- A. Convention Report:** Norm reported that we have the final distribution of the monies. ABTO is giving anyone who paid \$100.00 for a convention car another car. ABTO Treasurer is now returning the Early Registration Fee to ABTO members who paid their Convention fees and were members prior to May 5, 2008.
- B. UMC Hospital:** Hospital is still moving forward and the plans are being drawn up.
- C. Ronald MacDonald House” Chef for a Day”:** was a great success and we would like to do it again in 2009. The cost to the club was \$182.74.

New Business:

- A. Tucson Children’s Museum:**
- B. Electronics:** Glenn reported that there will be a wireless camera on the engine. The train will be controlled by push button. There will be a reed switch and a magnet on the engine. Momentum system will be analog-2 amps. Mounted in a TV cabinet. This cabinet will have room for the power supply and push button electronics.
- C. Layout:** Nick reported on this that there should be scenery on the inside and outside of the tunnel bridge. There is a wall of metal sheeting which will work well with the magnetic cars. There could be benches along 2 walls. There will be a 15x35 G gauge loop operated by push button, this will exit through a tunnel portal and re-enter through a second portal and bridge. This loop will be supported on acrylic for visibility.
- D. Kid powered locomotive,** Nick reported on this:
It will be made of a 3’ corrugated pipe, this can be covered. There is going to be a large railroad bell on it, also 2 cowcatchers, one of these will be in the front. A ramp located on the inside. There will be a shield protector to keep little hands off the moving parts.

- E. Janet Mitchell** reported on the Educational aspect of the project. On the short wall there could be 11x14 photo of an historic train, these could be held by up by magnets. On the long wall more photos or a mural; this could be a bright color, whimsical. On another long well a diagram of an engine made of plexi glass and colorful lights, this could be operated by a push button to make it light up.
Work will start on this 12/1/08.
- F.** Union Pacific donated \$1500.00 to the club for this project.
- G. 2009 Rails in the Garden:** The date is March 7th & 8th. Glenn has 7 layouts committed. Publicity is already being looked into. A motion was made by Nick and the board approved that the RITG raffle prizes for 2009 will be:
1st -Starter set with a family membership-2nd a convention car.
Trailer Tires: Jim Cook replaced one of the small trailer tires; because of the age and condition of the tire this was necessary. Cost of replacement was \$115.00. Nick Buchholz made a motion that the other 3 tires be replaced, this was approved. The tires on the Children’s layout will also be checked.
- H. Ken Karrels** presented plans for a “point to point” with a trolley “(like the 4th avenue trolley) or a small engine running on it in the gift shop at the Transportation Museum. This would be waist high on an acrylic shelf. They are hoping this will bring more people in. Willis made a motion to donate \$500.00 for the project; this was approved by the board.

There was no date for the next board meeting.

New Members

We have no new members for September.

The Tucson Garden Railway Society is a non-profit corporation incorporated in Pima County, Arizona. Society members are interested in all areas of garden and modular large scale railroading. We welcome new members and hope you will consider joining. Members help each other build layouts and learn about railroading and modeling.

The TGRS dues are \$30.00 per year and are due on June 30th of each year. For new members dues are pro-rated at \$2.50 per month remaining in the year until June 30th plus a \$15.00 initiation fee, the first year. Additional name badges cost \$1.00 for each badge after the first.

Electronic News Letter

With so many new members, I want to remind you that you can have the news letter delivered by e-mail. The club saves printing and postage costs but more importantly you get the news letter faster and can view the photos in color.

To join the email mailing list send an email to members-subscribe@tucsongrs.org; include your name and a simple message like "I am a new TGRS member and would like to join the mailing list".

If you are interested in the TGRS please contact one of the officers at the phone number listed below. If you wish to join immediately, send a check and your name, address and telephone number and the names for any additional badges to:

lby Ulmer
4935 N. Craycroft Road
Tucson, AZ 85718

Calendar of Events

- Oct 18 **Chuck & Ruth Taylor**
- Nov 15 **Gary and Peggy Martin**
- Dec 6 **Christmas Party**
- Dec **Festival of Lights & Layout at the Veterans Hospital**
- Jan **Jay & Sallie Sanders**
- Feb **Rincon Country RV Park**

TGRS Officers and Board of Directors

President:.....Norm Ulmer.....520-299-9401
V-President:..... Willis Fagg.....520-760-0147
Secretary:.....Ellen Stoesser...520-577-1210
Treasurer:.....Ruth Taylor....520-908-1312
Editor:.....Jim Miller..... 520-886-7611

At Large Board Members
Jim Cook.....520-760-2325
Chuck Cook.....520-797-1066
Nick Buchholz.....520-744-4932
Bob Dirksen.....520-742-9503

Tucson Garden Railway Society
8132 E. Baker Dr.
Tucson, AZ 85710