



Tucson Garden Railway Society's

Time Table

Society web site: <http://tgrs.homestead.com>
Editor e-mail: dizen@aol.com

October 2003

Meeting This Month

This month's meeting will be on October 25 at 1:00 PM at the home of:

Winnie and Neil Mosley
6600 East River Road
Tucson, AZ 85750

Telephone 327-3661

There will also be a 7:00 PM showing of the railroad so that club members can enjoy the spectacular lighting effects in this fantasy land of castles and dragons. If you have never visited the Mosleys, and don't understand what I mean, read the description of the railroad below.

Directions:

The Mosley's new home is on River Road between Craycroft and Sabino Canyon. It is on the south side of the road and the railroad is in the front yard.

Please exercise caution in parking as River Road is quite twisty with many dips and rises that limit sight lines. Remember to **bring chairs**.

The Railroad:

So Lets Build a Railroad, But
By Winifred R. Mosely

There are rattlesnakes, and packrats, not to mention nasty half dead cacti, and everything lives between huge boulders in the yard.

Get ready folks, because creativity has reared its shining head.

Call the fire department to get rid of the snakes. Dig up the cacti and watch the packrats run. Leave the boulders, the trains will go around them.

What shall we call the town and garden? The garden is planted and waiting for houses. Call the railroad Dragonwick, the same as our home. Dragons live in the caverns under a town. They listen to the engines whistle and they hear the church bells on Sunday, but mostly they love the singing and the organ music.

Make a dragon or two or three. Use papier-mache mixed half and half with plaster so they won't melt in the rain.

Light the cave with black light to make the dragons fluoresce. Now, build the town above the cavern and put the church high on the hill. Make a dragon wind up the hill, his tail hanging over, and his body surrounding the church, his mouth open by the double doors.

Don't show the people when the dragon attacks. They must paint the church again with dragon colors, green for his scales, gold for his shimmering eyes, and brilliant red for his fiery mouth. Then he won't eat the congregation. He'll just lie quietly and listen to the music.

Make a large castle with eleven towers and paint it gold. Each window must glisten and each tower light from within. There are stories for every tower, happy ones and sad, delightful ones and scary ones, and the stories are written for each family to read to their children. Those children will find the towers and understand what happens there.

One town is for winter with snow and houses glowing. Santa is coming and we see his sleigh. The train runs by with presents and we wonder if it will stop.

Build a town for autumn and put it on a slab above the waterfall. Have a cemetery nearby. Fly little paper ghosts from the tree behind the falls. Light pumpkins all over town. Play ghostly music softly so it won't interfere with the organ in the church. Make shivers run up and down your childish old memories.

Hand out tiny bottles filled with bubble juice and little wands so the children can join in the fun. The bubble machines on the roof will create the illusion of unleashed joy and laughter.

Spring is a layered garden filled with flowers and houses, and tiny trees around the track. A train is coming; always a train is coming. An engine grunts and groans around the town. The engines climb to the waterfall and go behind it. The smokestack puffs. Lets build the town with magic. Let the mind work miracles. Allow the audience to imagine all the little elves taking showers in the waterfalls. "I see em, I see em," the children cry out, and finally, slowly, the adults will see them too.

The night is dark but the layout is lit with hundreds of fairy lights. The stream from the waterfall glows from within,

and on the little lake a ship moves upstream and down, lit from the depths with blue lights.

There is music, and there is light, and the bubbles from the machines on the roof sifting down over everyone reminds them that childhood is only one dream away when you are in Dragonwick.

Credits: Nothing would exist in our front yard without the planning genius and design of Gary Martin who gave up his sleep and worked every morning, laying track, hauling materials, bending, stooping, and making the tracks work. Dragonwick exists because of his quiet devotion. How does one say thank you for all that.

I THINK I KNEW THAT! #9

BY ROY EBERBACH

This column presents my ideas and is not intended as the only way or the right way of doing things. This is what works for me. If you have different ideas that work for you send them along and I will share them with the club.

#9-1. What is this AC and DC electric stuff, and is it important?

There are basically two types of electricity and we use both in garden railroading. AC (alternating current) is the kind that is delivered to our homes and comes out of the wall sockets. That AC is delivered at 110 volts but it can be any voltage from a fraction of a volt to many hundred thousands of volts. AC is graphed like this + ~~~~~ -. The current flows back and forth between the negative side and the positive side. DC (direct current) usually comes via batteries. Again direct current can be any voltage. DC is graphed like this + ----- -. The current only goes in one direction from the negative side to the positive side. The low voltage that we run our trains on is direct current provided by batteries or by a power supply which turns AC into DC. We use somewhere between 5 and 20 volts DC for our trains. We need to know which kind of electricity our locomotives and accessories use, because using the wrong kind can damage our equipment. Always read the instructions carefully.

#9-2 What is the Golden Spike Ceremony?

As you know when they built the transcontinental railroad they started in both the mid-west and the west coast. When they met they had a ceremony marking the completion of the mainline and a huge party was held. They drove a golden spike which symbolized the last spike driven. In model railroading we too can have a party to celebrate the completion of our railroad. (are any of our railroads ever completed?) Members of the National Model Railroad Association can earn a certificate after finishing certain requirements. That is a fun thing and worth doing. In garden railroading another tradition has evolved. First, there should be a party. Next there should be a golden spike. (real gold or gold painted) Lastly the railroad should be basically finished knowing full well that it will never be really finished. Have your guests assemble. Invite some local dignitaries. If the mayor can't come invite the T.G.R.S. President. Then make a short speech about how the railroad came into being and how much fun and

enjoyment it has brought. Have two locomotives facing each other on the main line. Get at least one photographer in place to preserve the event and then with the help of the dignitaries drive the golden spike. You may want to use a long nose pliers instead of a 10 pound sledge. Enjoy the party!

#9-3. What do you mean that two old friends have come to help you build your railway?

In earlier years I was always in a hurry to finish what ever project I was working on. As a result I often rushed things along and my model work showed the error of my ways. Now with chronic pain bringing disability and arthritis claiming my fingers, I have had to figure out new ways of doing things. The two friends that I have rediscovered are TIME and GRAVITY. By this I mean that it may now take me several days instead of several hours to do a project. However by taking my time I can do a much better job. I can let glues and paints dry properly. The result is a neater and stronger project. Gravity comes in to help me hold things in place while I am working on them. Placing a building on its back or side may help me get that detail part in just the right spot. Before I would fiddle with clamps and the like to rush the job. Now I can sit back and let my friends help while I am planning my next project. Funny thing, I get more done because I am not having to redo things to get them right.

Workshops Reminder & Directions

As previously reported there will be four great workshops offered to TGRS members beginning at 9:00 AM and running most of the day on Saturday, October 4th. Bring a sack lunch. The workshops include:

Jane Dorgan's make and take on building unique outdoor figures from Sculpy clay. Jane asks each participant to **bring \$1** to defray the cost of the Sculpy and to bring wire cutters, needle nose pliers wooden manicure sticks and other small tools.

Janet Mitchell will demonstrate casting concrete roofs for buildings. See Janet's article on this on page 7

Gary Martin will demonstrate weathering by painting a car or locomotive with either an air brush or with commercial spray paints. Bring along a locomotive, a car or structure that you would like to weather.

Nick Buchholz will demonstrate battery and remote control installation techniques.

The workshops will be held in at Jim and Madelyn Cook's home; 10420 East Fort Lowell.

Directions: Fort Lowell does not run all the way out to the Cook's home so take one of the major east-west streets to Houghton Road. Go north on Houghton to East Fort Lowell (about one mile north of Tanque Verde). Turn right (east) on Fort Lowell and the Cooks are the second mailbox on the right (south) side of the road. Go through the gate and

follow the driveway to the left for parking. Please **bring your own chair**.

Space is limited so, if you haven't already, you should call Madelyn Cook (760-2325) or Janet Mitchell (743-9263) or Jane Dorgan (529-2430) to reserve a place. This is definitely not an event you will want to miss.

Roundabout Changes

Vice President Norm Ulmer tells me that the current plan is that we will see six layouts in the Phoenix and Arizona City area. We will have an **earlier departure**. The current plans are to meet not later than 7:00 AM, so that the bus can **depart no later than 7:30 AM**.

The meeting place is still at the west side of the Foothills Mall parking lot (between the cinema and Keaton's restaurant). When you get there look for the bus marked Mountain View Tours.

We are oversubscribed for the trip so some members may travel in private vehicles trailing behind the bus.

The cost remains \$18 per person and checks payable to TGRS, **must** be in the hands of Treasurer Willis Fagg (12440 East Ave. de la Vista Verde, Tucson, AZ, 85749) no later than October 15th or your bus seat will be given to the next person on the list.

Building Lighting Control

Steve Dunlap reports that he has had some success in using the 12 volt outdoor lighting systems to power the lights in buildings on his layout. Steve happened to buy the Malibu brand but any of the 12 volt outdoor lighting brands would do. Generally these plug into a wall outlet with a transformer box that either has a timer or an on off switch. The good part of this system is that the output from the box is a safe low voltage so there is no danger of shocks.

Another advantage is the flat wire that comes with these systems. With its flat shape it can easily be buried under dirt or decorative gravel. Steve bought some 12 volt and 18 volt bulbs and wired them to the flat wire. One click of the switch and he can turn on lights in several buildings.

One problem Steve encountered was that the bulbs were too bright to look realistic. He fixed this with a quick trip to an auto parts store (Steve went to Auto Zone but Pep Boys and Checker would also work) where he bought an dimmer switch designed for lights in a truck. He wired the dashboard light side of the switch into the circuit. Now he pulls the headlight switch on and rotates it to dim the lights in the house to a less bright glow. Steve reported that his switch was for a Chevy truck and cost \$12. Obviously other inexpensive low voltage dimmer switches would work as well.

The truck electrical circuit is 12 volts so it is compatible with the outdoor lighting circuit. And, as you are dealing with low voltage you don't need a fancy insulated box to mount the dimmer switch.

Big Bugs On The Attack!

By Dr. Roy W. Eberbach

As the month of August started, I noticed what started as a small problem in our garden railway. A few plants here and there were dying. I thought at first that it was the result of our cutting back on the drip irrigation in the garden. But then as August progressed the problem got bigger and bigger. By mid-month we had lost many fine and healthy plants. Then I began to dig around the plants and what did I find? Big white (woolly) grubs happily eating the roots of our plants. This was the first time that we had seen the bugs in the train garden. The first thing to do is to remove and kill as many of the invaders as possible by hand. Then apply a special grub insecticide into the dirt and mix it in well. August and September are two of the most popular months for grubs to come looking for a free meal. However, they can come at other times of the year. Unless the only plants that you grow in your train garden are "plasticus permanenty", you must be on watch. Anytime that you start losing plants for no apparent reason, check the roots for grub activity. Don't wait as I did thinking that it is some other problem.

Plans for Year End Party and Meeting

Our annual year end meeting and party will be held on Saturday, December 13 at Mary Ann and Roy Eberbach's this year. Roy plans to have trains running from noon on. At 12:45 there will be a brief "Golden Spike" ceremony signifying the end of construction (though we know that never ends).

At 1:00 PM the Eberbachs plan to serve lunch with the business meeting beginning around 2:30 PM and the gift exchange following.

The Eberbach's also plan to hold an Open House on Sunday, December 14, from 1:30 to 3:30 PM. Club members are welcome to attend.

Plastic Building Roofs

Gary Martin tells me that he has had it with removable roofs that blow off during storms, especially the thin plastic ones that curl up in our hot summer sun.

He has taken to cutting cement board to fit inside his buildings and gluing it to the underside of his roofs. The added weight keeps the roof in place and the rigid cement board keeps the plastic roof from curling.

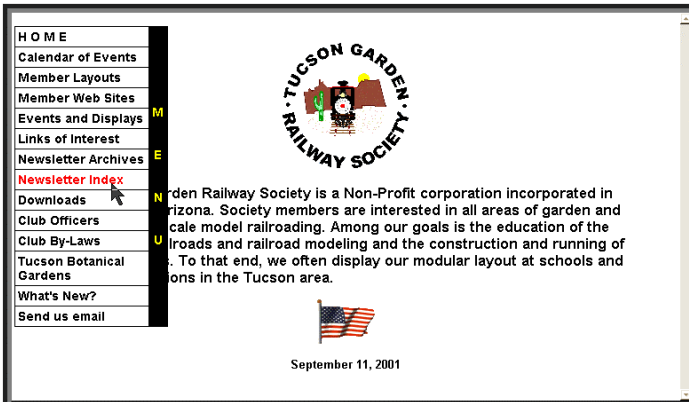
Gary has only been doing this for a short time but it seems to solve the roofing problems so many of us have. Of course Janet Mitchell's cast concrete roofs, which she will explain at the October 4 workshop (see article on page 7), will also solve this problem but Gary's approach will work for buildings where you don't want to have to cast a complete new roof.

Rail Bits # 7

(A stopover at the Digital Station)

The Newsletter Article Index by Jerry Tulino

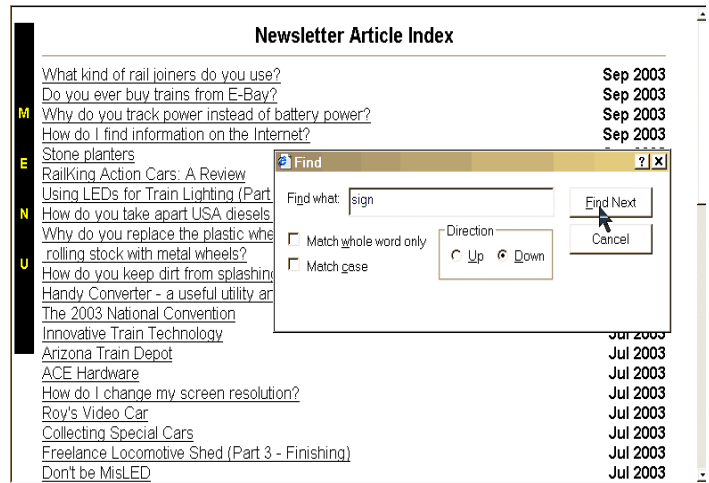
How often have you thought "I remember seeing an article about that in the newsletter but I have no idea when it was". If I call Dick Izen, he might know. Maybe some other club member can help, but who? Well, a new feature of the web site is designed to answer this question quickly and accurately. It is called the Newsletter Article Index. Each issue of the newsletter from this year has been analyzed and indexed. You can now go to the web site and answer a question like "Where was that article about making signs for my layout?" Select "Newsletter Index" from the menu...



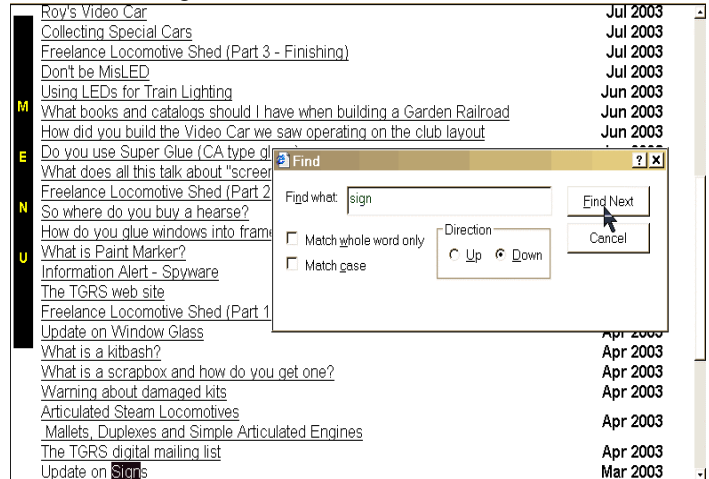
The Article Index page will be displayed. The index itself is a list of the titles of the articles from each issue. It is in order by issue. If you have an idea about which issue a particular article appeared in, you can just look through the list to find it. As the index gets bigger this may not be a practical approach. Allowing the computer to search the list will be a much more efficient and accurate means of locating the information you are looking for.



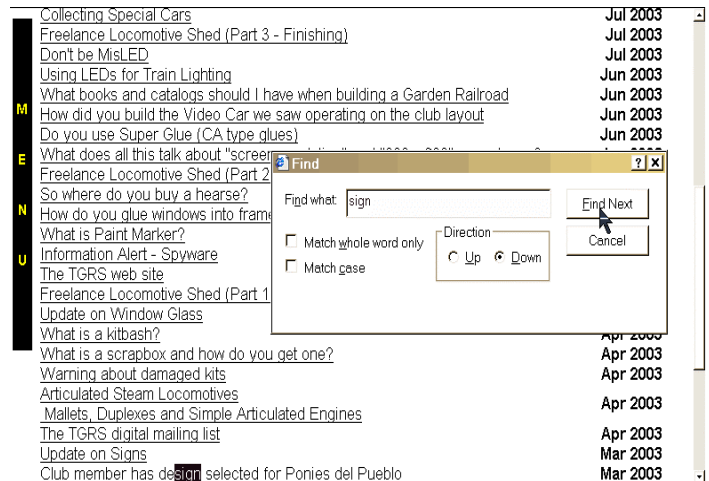
To be sure that you search the entire page, just place your cursor somewhere on the page title and left-click. This tells the search function to start from this point. Now, to perform a search (actually termed a "Find"), press and hold the control key (labeled Ctrl) and press the F key (upper or lower case doesn't matter). The "Find" dialog box displayed. Type in "sign" (no quotes) and click on the "Find Next" button.



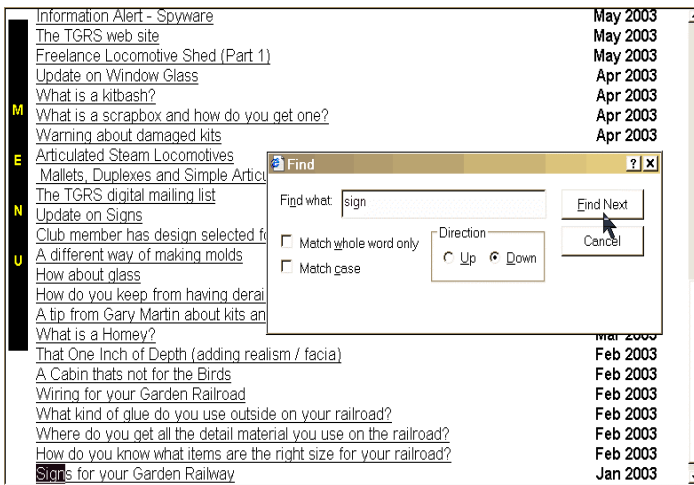
The "Find" function will find the first occurrence of the text you typed in, scroll the page down to expose it if necessary and highlight the "found" text. If this is not the article you think you remember or you want to see if there are any other articles that may help, click on the "Find Next" button again...



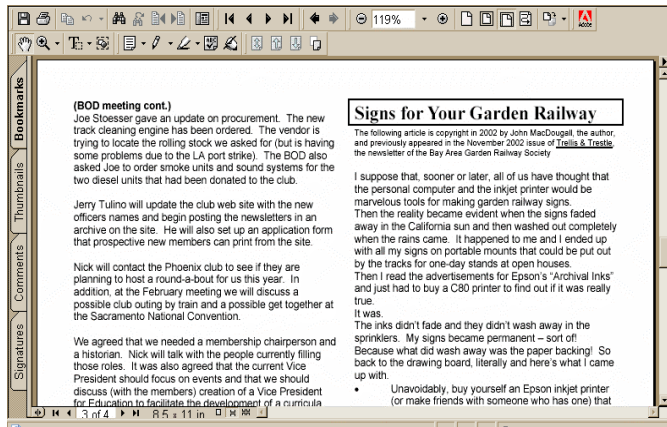
Notice in the following screen print that the text can be found within other words...



After pressing "Find Next" again, the following screen will be displayed...



Since this appears to be the right article, move your cursor over to it and click on it. This will take you to the correct issue of the newsletter and to the page where the article is...



This capability will always bring you to the right page of the newsletter. The only limitation is that the page is displayed from the top (it can take you to the page but not directly to the article). If the article you are looking for is not visible on your screen, just scroll down to see it.

Also, as you can see from the pictures of the "Find" dialog box, you can search backwards (click the "Up" radio button and then the "Find Next" button) if you want to go back to an article you skipped previously. Since the index is not "miles" long, I don't currently see any value in using the "Match whole word only" or "Match case" options.

TGRS VIDEO EXCHANGE

By Chuck Cook

If you are a fan of videos of model or real railroads, come join the club. Actually, there is nothing to join. The video exchange will take 2 forms.

The simplest is; I will bring a laundry basket full of videos to each meeting. Members can label theirs, toss them in the basket, and check out a video of another club member. All members can borrow a video after the meeting, but to encourage participation, contributors will get first choice and can select before the meeting begins.

There will be a sign out sheet and you should return borrowed videos at the following meeting or at the latest, the one after that. Be sure to label your videos with a return address sticker. You can leave your videos in the basket, put in some different ones, or take them back home at any time.

The more detailed method of exchange will be for each interested member to put their video library list in the form of an Excel document. The non computer members can hand write a list and I will make an Excel document for them. After a few members have contributed, I will compile all the lists on a floppy or CD and interested members can have a copy. Once you have the list you can call the owner and ask them to bring the video you particularly want to see to the next meeting.

I hope you will join in with a video or two at the October meeting.

Tucson Botanic Garden Holiday Display

Gary Martin and Nick Buchholz met with the folks at the Tucson Botanic Garden (TBG) and plans have been made for the second annual holiday garden railway display. Construction will begin at 8:00 AM on Monday, November 10. There will be an orientation and training meeting for all TBG and TGRS operators in the early afternoon of Sunday, November 16 and the railroad will begin public operations at 11:00 AM on Thursday, November 20.

Operations will be from 11:00 AM to 3:00 PM daily except that there will be extended hours for the TBG's party night (Wednesday, December 3) and the public Luminaria nights (Friday through Sunday, December 5 through 7). We have committed to run the railroad in conjunction with the TBG volunteers, through the end of the year. It is possible that the TBG volunteers will want to borrow our equipment and keep it running into January as they did last year.

Plans call for displaying the railroad in the same area as last year but Nick has designed a new plan with one long loop and several sidings to allow multiple train operation. The details will be covered at the October meeting where there will be a sign up sheet for persons who can help run the layout.

Minutes of Last Meeting

Respectfully submitted, Ellen Stoesser

The meeting was held on September 20, at the home of Jay and Sallie Sander's. Attendance: 61 members and guests.

Pres. Nick Buchholz called the meeting to order and thanked the Sander's for hosting. Our guests were welcomed to the meeting.

The minutes of the August meeting were approved after a correction that Tucson was co-hosting the convention.

Treasurer's report: Willis Fagg reported a current account balance of \$4128.05. Revenues to date for fiscal year 2003-2004 are \$1,168.00 and expenses \$394.06 for a net increase to date of \$773.94. 77% of members have paid their dues, if you are uncertain about your membership status, you should contact him. Willis had information sheets on the 20th Garden Railway Convention to be held in Denver, August 12-15, 2004. Web site: <http://www.denver.org/convention.html>. Reservations are best booked at the "best rate" rather than the convention group rate.

Vice President's Report: Norm Ulmer reported there are 70 people signed up for the 11/08/03 Phoenix Round –a-Bout. We will visit 6 locations with lunch being provided for us. On the way back we will stop at the home of Gerry Mc Kenzie in Arizona City. We were going to eat at Keatons but they are going to be closed for remodeling. Thunder Canyon and Outback were suggested as alternatives.

There is a contest to get a theme and a logo for the 2008 Garden Railway Convention. All ideas will be sent to Rich Hall and if your idea is used you will win a prize. Norm will be holding a meeting with his volunteers after our meeting. He would also like to hold a meeting in November at Phoenix.

Rich Hall would like to get 12-16 people to go on a tour to Germany. The trip would last 9-10 days with visits to several railroads, Normandy and other interesting places. The cost of the trip would be \$1600.00.

Norm also thanked all the people who donated or worked on the coffee can barricades.

The GATS show will be the first weekend in February.
Committee Reports: Dave Tiefenbach resigned from the Permanent Layout Exploratory Committee. The board will be looking for a replacement.

Joe Duda had donated HO kits to be put together or "kit bashed", several volunteers took them home to do this.

Janet Mitchell had a sign up sheet for the 10/4/03 workshop to be held at Jim and Madelyn Cook's. Please bring a sack lunch and a comfortable chair. Tools to bring if you have them: wire cutter, needle nose pliers, manicure tools, small tools that you think would work.

Workshops: Jane Dorgan - Sculpey figures and styrene, Gary Martin-airbrush and weathering, Janet Mitchell-how to cast concrete roofs, Nick Buchholz-how to put power in locomotives. Card table and long folding tables are needed. Directions to get there are in the Time Table.

Roy Eberbach had a sign up sheet for the Public Pay Round –a-Bout, for people who wanted to show their layout for a weekend in January. He held a meeting after our meeting.

Joe Stoesser is placing an order for shirts and caps on Monday, if you would like to order please let him know.

Tucson Botanical Gardens report: The committee met again with TBG about the Holiday Layout. TBG made \$10,000 last year. There will be 2 raffles, with the profits being split between TGRS and TBG.

We will use the rails from last year, with the test layout having two trains running using two electrical train separators. Elevations and loops will make it interesting.

November 20 is the "start to run date". Regular hours will be 11.00-3.00, if there are schools or other groups the hours will need to be longer. TBG will run the train after December 31, until the layout is removed.

Gary Martin has a sign-up sheet with the setup dates being November 10-19 with 10 people needed on day one and 5-6 after that. There will be a fact sheet about what trains are running each day. We will need to attend a garden and plant orientation. Houses that can be made at home and collapse to store easier and be used later on modules are needed. We did not commit to a permanent layout.

Garden Railways had an article about Noah's Concrete Creations in Tucson; they make buildings trestles, and bridges. Dick Izen has been trying to get in touch with them.

There was a sign-up sheet for next year's meetings; it will be decided in December if there is to be a January meeting, because of the TCC Home Show.

A question was raised about if January was a good time to have the Public Pay Round-a-Bout. Roy said "he was advised to just pick a day and run with it"

Dean Newman has computer software to reprogram Phoenix Sound Systems. If you have questions or need help, please contact him.

Frank Trunzo would like someone with knowledge of plants for railroads to speak at the Green Valley Garden Sound Club Meeting.

Glenda Bockel will hold a weekend styrene workshop in November at a cost of \$65.00. You will learn a "sampling of techniques". If interested contact Alan Lathrem

Dick Izen will be putting an address in the Time Table if anyone needs Hartland repairs or parts.

Our "how to" and "for sale" table were loaded with various items, Jane Dorgan's Sculpey Figures, picnic benches and several other articles.

The meeting was adjourned.

The next meeting will be held at Neil and Winnie Mosely's on October 25, 2003 at 10.00 A.M. There will also be an Open House in the evening at 7:00 P.M for the better view of all the lights.

The next Board Meeting will be held at Norm and Ibbey Ulmer's on October 27, 2003 at 7:00 P.M.

CASTING ROOFS IN CONCRETE

By Janet Mitchell

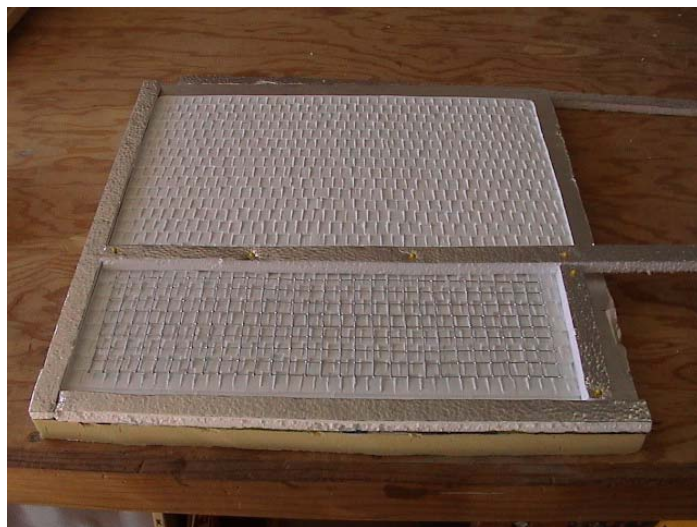
Supplies: Precision Products roof panels (available from the Lathrems), Rapid Rock anchoring concrete mix or Quickcrete vinyl concrete patch, Styrofoam sheet insulation for molds 1" and 3/8" or 1/2" thick, quilt pins, 1/2" or 1/4" hardware cloth.

Tools: wire cutters, knife to cut foam, small trowel to smooth concrete

Trim the "border" from the Precision Products roof panels. Cut a base from the 1" foam (I prefer the kind with foil or plastic covering—the concrete doesn't stick) at least 2" larger than the roof panels.

From 3/8 or 1/2" foam cut 1" wide strips. Attach two of these to the base on adjacent sides with glue to frame the panel. 3/8" makes leveling to a good thickness easy.

Lay the roof panel in this corner wrong side up—be sure to note the top and bottom. Decide which finished edge you want to use and place it in this corner. For shake shingles, I use the top with a ridge, but with corrugated metal, I use the bottom to have a full panel at the bottom of the roof. I don't usually use a mold release with Rapid Rock, but you need to spray with WD40 and let it dry if you are using vinyl patch.



Mold prepared to cast two "shingle" roof sections

Cut hardware cloth a little smaller than you want your finished roof panels to be and smooth it as flat as possible.

With the strips of 3/8 or 1/2" foam cut pieces to length for the other two sides of your roof. Pin in place through the panel. You can also cut pieces to make any cutouts you need for chimneys, dormers, etc. I cast panels about a 1/4"

wider and an inch taller than I want the finished panels because I cut them to size with a small wet saw. If you don't have a saw, cast to the finished size.

Mix your concrete to the consistency of thick pancake batter, pour, and insert hardware cloth. You only need a 1/4" layer of concrete (the 3/8" foam makes it easy to level to about 1/4") and jiggle the hardware cloth into it. Smooth the top and level it. Vinyl patch sets up slowly and gives you time to get a nice smooth and level pour. If you are casting to the exact size, vinyl patch works best.



Mold with lower half filled. Note piece inserted at top to provide cut out to fit a dormer roof, and lines made by inserting the hardware cloth

When it is set, but still "green" and still in the mold, you can carve the edges smooth and bevel the top and bottom. I cut the ridge edge at a 45° angle and the lower edge at about a 30° angle.

When the concrete is hardened, remove the two sides you added last and remove your roof.

I use Jigstone triangle pieces to make a gusset to hold the pieces of a roof together—you could cut a piece of wood. I seal the roof ridge with mortar repair sealant and paint.

Between castings, clean the mold with a soft brush and cleanser (soft scrub works well).

Positions Open

Our newly modified bylaws call for a ninth Board of Directors member. Since the outgoing president (Gary Martin) has declined to serve this position is open to the membership at large. If you have an interest in serving on the BOD please contact President Nick Buchholz (744-4932)

As noted above in the minutes, Dave Tieffenbach has resigned as chair of the committee exploring the feasibility of a permanent layout. If you are interested in participating on this committee, please let President Buchholz know.

Final Dues Notice

Annual dues were supposed to have been paid by the end of June. When you receive this news letter it will be the end of September or early October.

Willis Fagg, TGRS Treasurer, has advised me that some members have not yet paid their dues. Please check the address label on this newsletter. If there is a large red dot after your name, club records show that you have failed to pay dues for this fiscal year.

If you have a red dot after your name please pay your dues immediately. If you do not we will have to assume that you have decided not to remain a TGRS member.

Willis may be reached at:
Willis Fagg
12440 East Ave. de la Vista Verde
Tucson AZ 85749
Telephone 760-0147

The Tucson Garden Railway Society is a non-profit corporation incorporated in Pima County, Arizona. Society members are railroading. We welcome new members and hope you will consider joining. Members help each other build layouts and learn about railroading and modeling.

The TGRS dues are \$30.00 per year and are due on June 30th of each year. For new members dues are pro-rated at \$2.50 per month remaining in the year until June 30th plus a \$15.00 initiation fee, the first year. Additional name badges cost \$1.00 for each badge after the first.

If you are interested in the TGRS please contact one of the officers at the phone number listed in the Calendar section below. If you wish to join immediately, send a check and your name, address and telephone number and the names for any additional badges to:

lby Ulmer
4935 N. Craycroft Road
Tucson, AZ 85718

Calendar of Events

- Oct 4** Multiple workshops at Jim and Madelyn Cook's home. Begins at 9:00 AM and runs most of the day. Bring sack lunch.
- Oct 25** Meeting at Neal & Winnie Mosely's home 1:00 PM (evening showing at 7:00 PM)
- Oct 27** Board of Directors meeting at lby and Norm Ulmer's home – 7:00 PM
- Nov 8** Roundabout in Phoenix (with Arizona Big Train Operators) – bus labeled Mountain View Tours departs west side of Foothills Mall parking lot (between Cinema and Keaton's) promptly at 7:30 AM. Lunch provided by ABTO. Return estimated around 6:00 PM
- Nov 15** Meeting at Ken & Mary Karrels' home - 1:00 PM
- Nov 10** Begin construction of Tucson Botanic Garden holiday layout
- Dec 13** Meeting and Holiday Lunch and Gift Exchange at Roy & Mary Ann Eberbach's home – Trains from Noon, Golden Spike Party at 12:45, Lunch at 1:00 PM, Business Meeting around 2:30 PM, Gift exchange to follow

President:Nick Buchholz	520-744-4932
V-President: Norm Ulmer	520-299-9401
Secretary:Ellen Stoesser	520-577-1210
Treasurer:Willis Fagg	520-760-0147
Editor:Dick Izen	520-498-4634

Tucson Garden Railway Society
12356 North Mount Bigelow Road
Oro Valley, AZ 85737