



# Tucson Garden Railway Society

March 6, 2001

Submissions are requested for the TGRS Newsletter in the categories of RailRoad News and Tech-Notes. Articles should be submitted by **March 4, 2001**, send submissions to:  
Email to: nbuchholz@noao.edu  
Snail mail to: TGRS, 3401 W. Blacksill Dr., Tucson, AZ 85741

## TGRS March 17<sup>th</sup> Meeting At The Dorgan's.

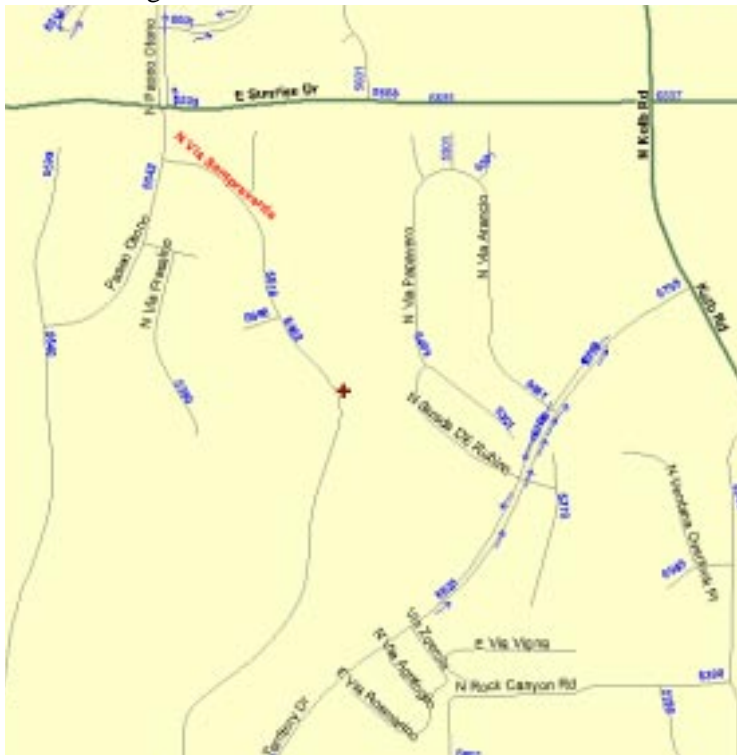
Where: Mike and Jane Dorgan's house  
5416 N. Via Sempreverde  
Tucson, AZ 85750

Telephone (520) 529 2430

The Meeting will start at 1300 (1:00PM)

Info Mike and Jane ask that people try to carpool or use the distant parking areas as parking near the house is limited.

To get to the Dorgan's, travel East or West on Sunrise to Paseo Otono and turn south. The first left on Paseo Otono is Via Sempreverde. Find parking in the areas North or south of the Dorgan's.



## Editor's Notes by Nick Buchholz

Congratulations go out to Jane Dorgan for winning the magnificent RR Quiz. The prize was fantastic. We have another RR Quiz this month I hope more of you will try entering. It only takes a 3x5 card and some fun time. If I don't get some more entries I'll assume you aren't interested in them and I'll drop them. However, you can never tell when the prize might be custom built bridge for a site on your railroad.

Two more contests are announced in this newsletter. The first gives you an opportunity to come up with module ideas. The second one is to pick an appropriate name for the TGRS Modular Railroad.

Announcements and sign-up requests for the County Fair and SAHBA Layouts, are included. We hope to fill out the roster of people to attend the two layouts so we can spread the work around for this year's Fair.

## New and Returning Members

I hope everyone will welcome another new member family. Also please update your mailing lists in accordance with the information below:

Herb and Terry Hoffman  
36395 S. Wind Crest Drive  
Tucson, AZ 85739  
825-6686 825-7542 fax thhdp@aol.com

## Help Wanted.

Your Newsletter needs you. I am looking for some public spirited TGRS member or members to become assistant editor and take some of the work load of writing articles off of me. The lucky person will get to write articles about peoples' railroads, write jokes and quizzes and help with articles of interest to the club.

If this sounds like fun, contact me at the next meeting. Or if you just can't wait to start, call me evenings at 744-4932.

## RR Quiz

The system of naming Steam locomotive classes has been around along time, and with few exceptions the names of locomotive types by wheel arrangement is accepted all over. In this months quiz you are asked to match the Type name to the wheel arrangement for some of the standard wheel arrangements. On the following page are two columns. For your answer write the letter of the type name in the second column next to the number in the first column which matches the wheel arrangement. The person who gets the most correct will win a prize: (In case of a tie there will be a random drawing of all correct entries).

Wheel Arrangement		Wheels	Class Name
1	2-4-2	o00o	A Union Pacific
2	2-6-0	o000	B Hudson
3	2-6-2	o000o	C Pacific
4	2-8-2	o0000o	D Decapod
5	2-8-4	o0000oo	E Mastodon
6	2-10-0	o00000	F Yellowstone
7	4-4-0	oo00	G BigBoy
8	4-4-2	oo00o	H Mogul
9	4-4-4	oo00oo	I Lady Baltimore
10	4-6-0	oo000	J Allegheny
11	4-6-2	oo000o	K Prairie
12	4-6-4	oo000oo	L Atlantic
13	4-8-2	oo0000o	M Northern
14	4-8-4	oo0000oo	N Mountain
15	4-10-0	oo00000	O Berkshire
16	4-10-2	oo00000o	P Mikado
17	4-12-2	oo000000o	Q Columbia
18	2-6-6-6	o000 000 000	R American
19	2-8-8-4	o0000 0000oo	S Ten-wheel
20	4-8-8-4	oo0000 0000oo	T Southern Pacific

## Module Idea Contest

Have an idea for a neat module? Don't know how to build it? Join the Great TGRS Module contest! Submit your idea, on 8.5x11 pages, to the Newsletter and have a chance to have the *Module Masters* help you build the module of your dreams.

Entries should outline the module idea, the overall size and any buildings, scenery or track work needed. A sketch would be helpful. (If you can't draw talk to Gary or Nick for help). The module idea can be anything you desire. A winning entry will be selected by a highly trained (we told them what to do) and carefully chosen (we picked some folks at random) team of judges.

The *Module Masters* will help you build the submitted module and the winner will also receive a handsome plaque to display on their railroad

## County Fair

Please think about the commitment you can give to the county fair layout. We will have a sign-up sheet for days and times when you can help run the TGRS fair layout. The mechanism for getting into the fair will be different this year and you will have to have your name on the list of helpers to get into the Fair. we will have NO general entrance passes available.

If you want free entrance into the fair you will have to sign up to work a shift or two during the Fair which runs from the 19<sup>th</sup> to the 28<sup>th</sup>. We will be setting up during the week prior to the fair the exact dates will be revealed at the meeting.

If you can't be at the meeting Please call Mike Dorgan to get your name put on the Fair work Schedule.



---

## TGRS Railroad Name Contest

The TGRS has acquired a large number of pieces of rolling stock and engines. It would be nice to have some of this labeled for the TGRS's own railroad. To do this we need a name. To Choose a name we need suggestions. Below are a few names submitted by various TGRS members over the years. If you have a suggestion please send it to the Newsletter address listed above We'll gather all the names together and have the club vote on the names over the next few months. I'll publish the details of the voting next month.

### Proposed nameReporting

#### Mark

Tucson, Gila & Rio Salado RR	TGRS
Tucson, Globe & Rillito Southern	TGRS
Tucson, Grande, Rincon & Silverbell RR	TGRS
Red Rock & St. David RR	RRStD
Middle March & Ruby RR	MMR
Rillito, Pantano & Santa Cruz RR	RPSC
Red Rock, Rattlesnake & Road Runner RR	RRRRR
Rattlesnake & Tumbleweed Western RR	RTW
Coyote, Agave & Sandhill RR	CAS
Javelina, Sahuaro & Road Runner RR	JSRR
Sahuaro, Ocotillo & Cholla Southern RR	SOCS
Sahuaro Northern RR	SN
Sonora Northern RR	SN
Northern Sonoran Desert RR	NSD
Arizona Southern RR	AS
Arizona & Helangon RR	AHLG
Patio and Birdbath RR	P&B
Blast Furnace & Brick Kiln RR	BFBK

---

## About Scale and Gauge

I thought a few words about this topic for new people would be appropriate. These words are often used interchangeably to describe our trains. I do it myself, but they actually have different meanings.

First - o

gogo is simple, in the US, gauge is the distance between the rail heads on the track. American standard gauge, (the SP, UP and BNSF are standard gauge railroads) measures 4' 8.5" between the rails, on average. Our track, called gauge 1 since the late 1800's, has a measured gauge of 45mm or 1.77". H0 or half-0 (zero) track has a gauge of .65" or about 16.5 mm. OK, everybody got it?

So what the heck is G-Gauge. G-Gauge is the name LGB gave to the track it was packaging with its train sets. It was a marketing ploy and an attempt to hijack the track size for itself. (Ask about the LGB-REA lawsuit) It failed, but has been the cause of a lot of confusion.

Now - scale - scale is another simple idea. The scale of our trains is the ratio between the model/toy and the prototype (or full size) trains they represent.

So what is the scale of our trains? This is where it gets complex. Because the equipment and molds needed to make track are expensive some compromises were made. The gauge 1 track we use was originally used to represent standard gauge railroad track this means the models which run on it should be 1:32 scale. But, LGB, the people who started the current Garden railroad fad wanted to model the cute narrow (meter) gauge trains of Europe. To do this the scale of their trains needed to be 1:22.25 to run on gauge 1 track. However, one of the standard train scales from the 1800's was 1:22.6, which used gauge III track. Now the compromises, LGB decided to build their toy trains in 1:22.5 a compromise which would allow them to run on 45mm track but still be close to scale III.

So LGB is merrily chugging out meter gauge trains on gauge one track when the Americans want to get into the act. "We don't want no stinkin' meter gauge. We want 'mer'c'n trains", but we want to use the same track as LGB so we can use the neat stuff they already produced. OKay, so a well known manufacturer starts building American standard gauge trains to run on gauge 1 track. Now more compromises, models in 1:32, the correct scale for the track, look small next to the 1:22.5 LGB products so the well known manufacturer uses 1:29 for their trains so they will look better with the LGB trains.

So here we are with two major scales being used on gauge 1 track neither of which matches the track exactly.

Then in the last ten years along comes another group of modelers. These people are interested in having models which are as close as possible to the real thing. They model three foot, two-foot, 42 inch or standard gauge on the widely available 45mm track and they want the track to be the correct width compared to their models so we end up with a whole slew of new scales. 1:20.3 (15mm) scale models 3' narrow gauge, 1:13.7 (22.5mm) scale models two foot narrow gauge, 1:24 (1/2" or 12.5mm) scale models 42 inch narrow gauge and good old 1:32 (3/8" or 9.5mm) models standard gauge.



Confused Yet??? Well don't be. If you are interested in scale accuracy you probably already know most of this. If you just want to have fun running trains in your garden you can ignore most of it. If you are a politician you can lobby and have the whole situation fixed!!! *Ha, ha, actually hurt myself laughing on that one.*

---

## SAHBA Home show

April 6-8 is the SAHBA home show we will be setting up on the 4th and or 5th. Contact Mike Dorgan or Gary to find out the exact setup time and to volunteer to work during the show.:/

The Tucson Garden Railway Society is a non-profit corporation incorporated in Pima County, Arizona. Society members are interested in all areas of garden and modular large scale model railroading. We welcome new members and hope you will consider joining. Members help each other build layouts and learn about railroading and modeling.

The TGRS dues are \$30.00 per year and are due on June 30<sup>th</sup> of each year. For new members dues are prorated at \$2.50 per month remaining in the year until June 30th plus a \$15.00 initiation fee, the first year. Additional name badges cost \$5.00 for each badge after the first.

If you are interested in the TGRS please contact one of the officers at the phone number listed in the Calendar section below. If you just **have** to join immediately, send a check and your name, address and telephone number and the names for any additional badges to:

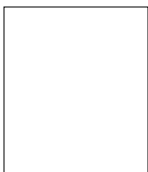
Jan Lathrem,  
1750 West Tangerine Rd.  
Tucson, AZ 85737

---

## Calendar Update

Mar 17 - TGRS Meeting at the Dorgan's  
Apr 6-8 - SAHBA Home Show  
Apr 18-29 - County Fair Show  
May 12 - TGRS Meeting at the Trunzo's  
Jun - Open - no meeting scheduled as yet  
July 14 - TGRS Meeting at the Wray's  
Aug - Open - no meeting scheduled as yet  
Sep 22 - TGRS Meeting at the Karrels  
Oct 13 - TGRS Meeting at the Anderson's  
Nov 10 - Round-A-Bout, Meeting at the Eberbach's  
Dec 15 - TGRS Meeting at the Martin's

<b>President:</b>	Gary Martin ..... (520) 299-7428
<b>V-President:</b>	Mike Dorgan ..... (520) 529-2430
<b>Secretary:</b>	Jane Dorgan ..... (520) 529-2430
<b>Treasurer:</b>	Fred Wray ..... (520) 648-5609
<b>Editor:</b>	Nick C. Buchholz..... (520) 744-4932



Tucson Garden Railway Society  
3401 West Blackstill Dr.  
Tucson, AZ 85741