

This article was submitted for publication in the Greater Vancouver Garden Railroad Club (GVGRC) Newsletter Burnt Journal, Issue 19 Number 4, April 10, 2012 Edition.

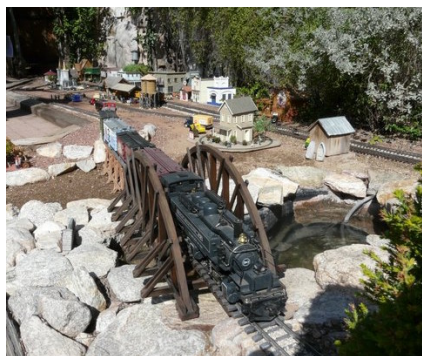
Tucson Garden Railway Society's Rails in the Garden Tour

By Janet Schlenker

We spent our winter down south mostly in Tucson, Arizona. This year we attended the Tucson Garden Railway Society's (TGRS) Rails in the Garden Tour which ran March 9 and 10th. There were eight Garden Railroads on the tour scattered around the northeast Tucson area, but we only had time to see five of them. I have included brief descriptions ¹ and pictures of the railroads that we saw. For more information on TGRS see their web site at <http://tucsongrs.org/index.shtml>.

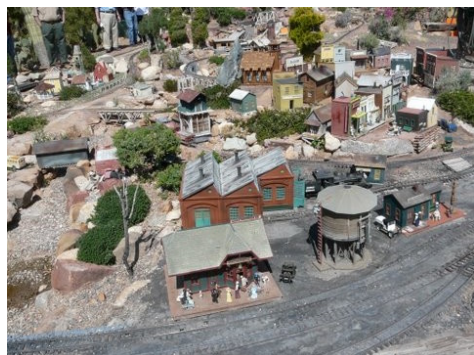
The Rock Bottom Railroad

This Garden Railroad was a lot of fun and showed a lot of imagination. It reminded me more of a visit to a brewery with buildings and settings depicting people having a good time. It even had a "beer bottle garden."



The Eagle Mountain Railroad

This was the largest layout that I have ever seen. Trains traveled long distances passing through historical Arizona towns and running a long side a true 5 foot tall representation of the Sedona red rocks. There was also an open pit copper mine and sawmill complete with logging camps.



The Red Rock Railroad

The owners are avid western movie fans and they have incorporated the old west of the 1860-1890 era into their railroad. Some of the scenes included: an Indian Village, a burned out old fort and ghost town. The other unique part was all the handmade clay figures. There were 500 clay people and 100 bears. A lot of imagination was used in their creation.



The T & T Railroad

This layout consists of three interconnected track loops enabling multiple train operation. The tracks wind through open garden, shaded areas, through tunnels and over areas raised on trestles. It was a nice combination of gardens and trains.



The Catalina & Rincon Saddle Railroad (CRS RR)

The CRS RR is a steam era railroad. The layout shows creativity as it meanders along the wall enclosing the backyard going around trees and existing landscaping.

